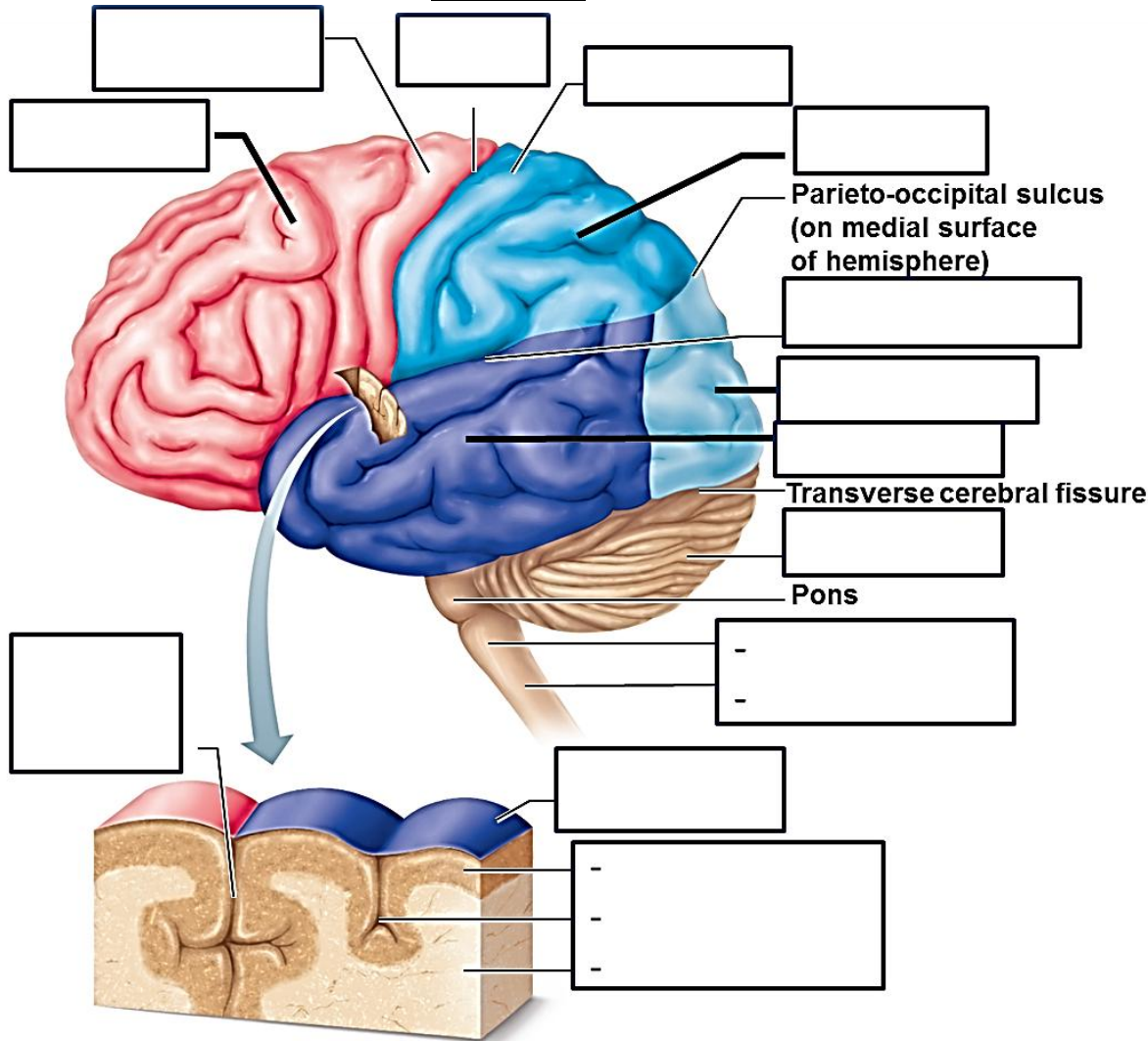


# Practice: Labeling the Brain

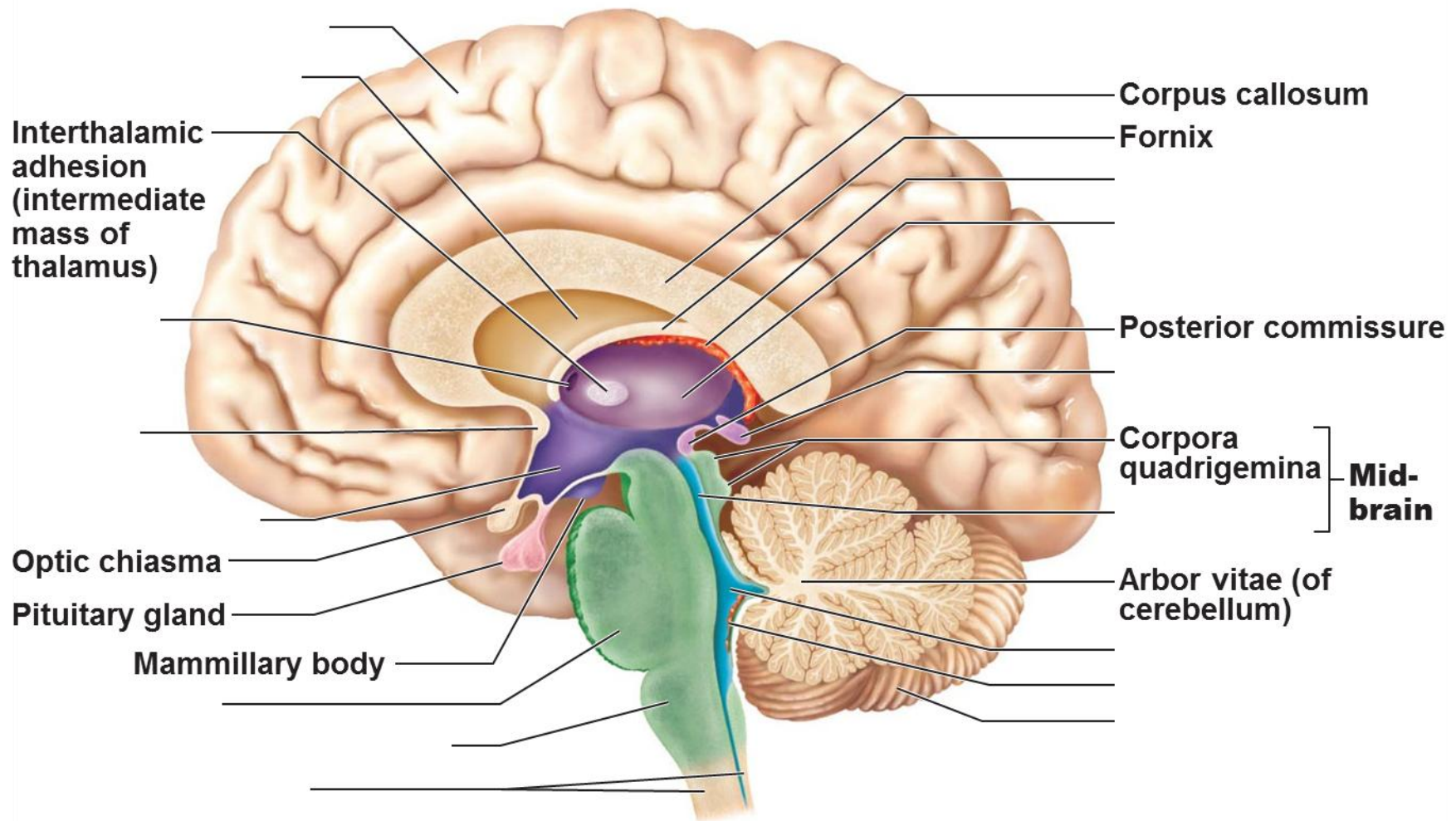
A & P Honors

## - SIDE 1: LOBES and FISSURES of the CEREBRAL HEMISPHERES



1) Describe the difference between gray matter and white matter at the neuronal level and how they are organized in the cerebrum:

2) Prediction: Describe 3 major differences between the human brain and the sheep brain:



*Shade the following portions and describe their primary functions:*

- = Brain stem:
- = Cerebrum:
- = Cerebellum:
- = Diencephalon: