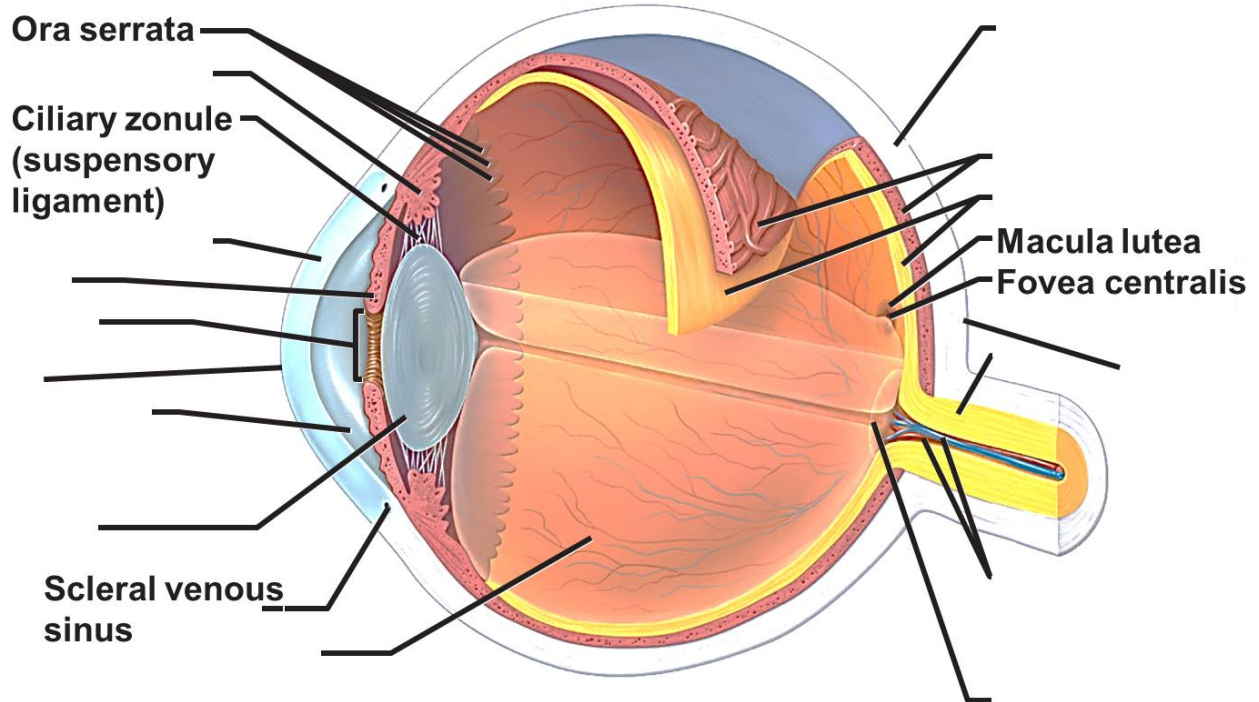
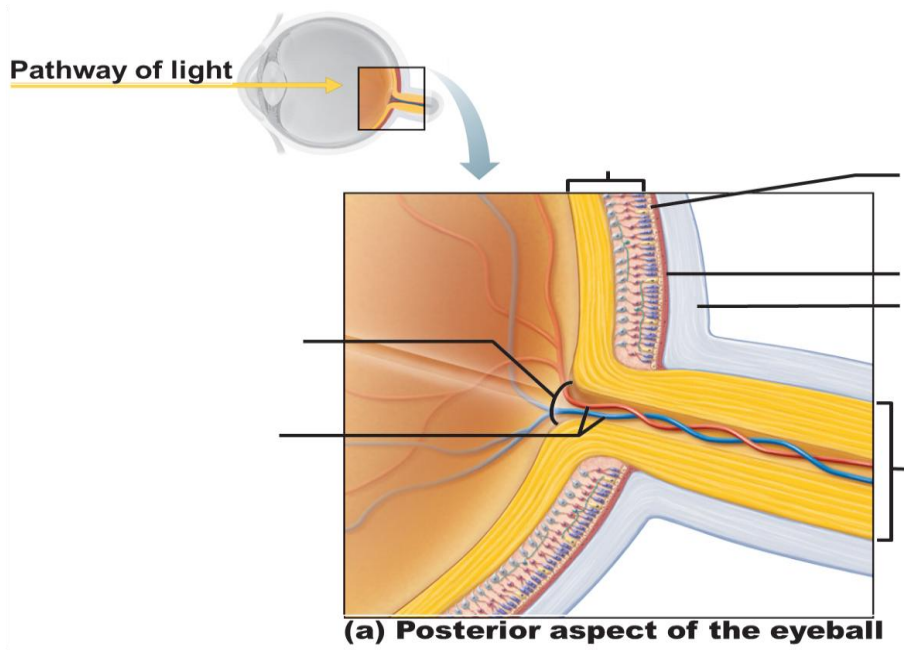


Practice: Labeling Parts of the Eye

A & P H.



Structure:		Anatomical Features/Special Characteristics	Physiology
Conjunctiva			
Lacrimal Apparatus			
Fibrous Layer	Sclera		
	Cornea		
Vascular Layer	Choroid Layer		
	Ciliary Body		
	Iris		
Retina			



Describe the function of the items that were labeled above but *not* included in the chart on the front page (3 structures should be listed)

1)

2)

3)

Photoreceptor Cells: (Compare and Contrast RODS AND CONE CELLS in the retina)

